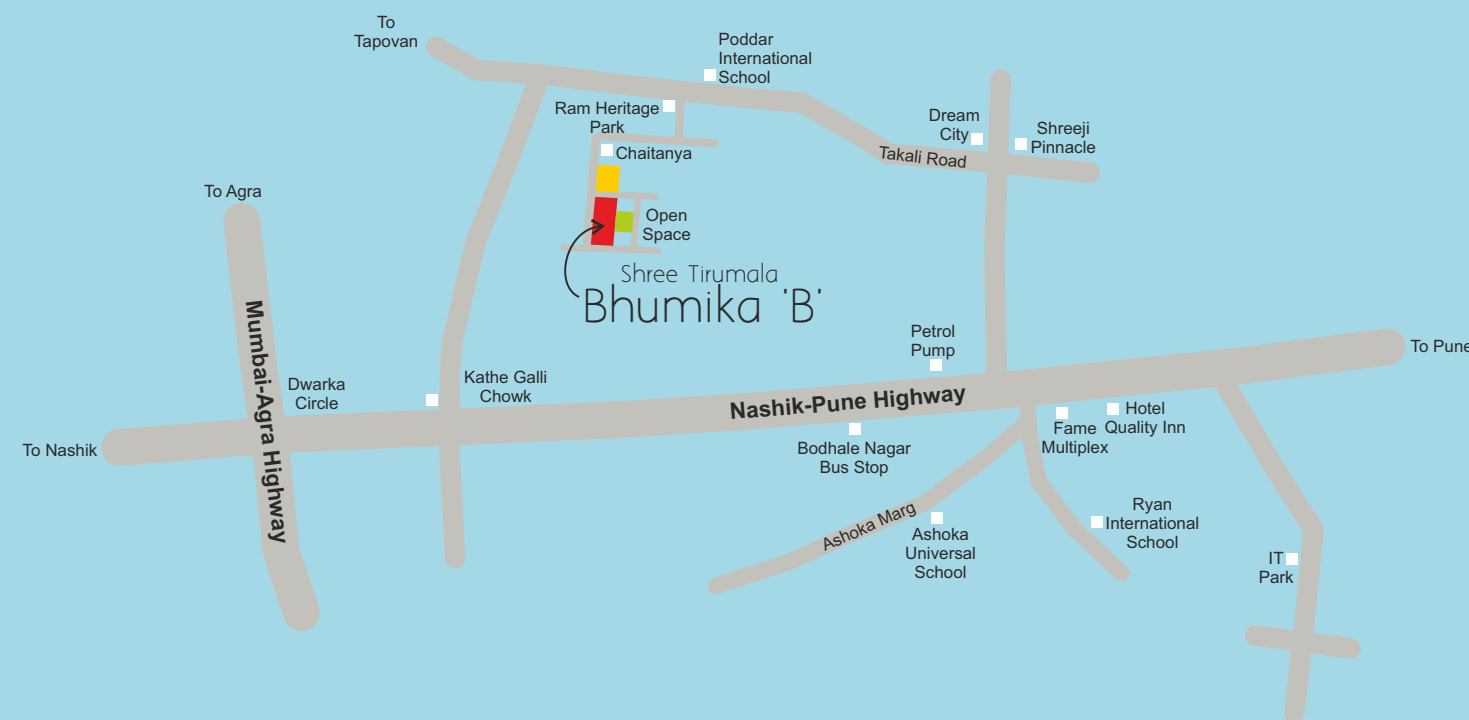


## The Golden Moment !

Roongta Group Awarded for  
 "Affordable Homes with Best Amenities"  
 from Hon. C. M. Shri Devendraji Fadnavis  
 on 24<sup>th</sup> Oct. 2016



**Roongta Group**<sup>TM</sup>  
 Builders & Developers  
 INNOVATING... CREATING... TRANSFORMING

**Corporate Office :**  
 Shree Tirumala Ashirwad Apt, Pethe Nagar Road (Indira Nagar),  
 Opp. Balbharti, Nashik - 422009.

**City Office :**  
 Padmalaxmi Apartment, Near Vishwas Bank, Sawarkar Nagar,  
 Gangapur Road, Nashik - 422 013.

**Call : 7774034651, 7774034652, 9764031000**

**Mail : connect@roongtagroup.co.in**  
**Nikhil Roongta : 9822715651**

Follow us:



Mobile Apps.:



Member of  
**CREDAI**  
 NASHIK

Note : Whilst every care has been taken in the preparation of this brochure the promoters reserve every right to make additions, alterations, amendments that may be necessitated from time to time. Midas Touch / 2312731

Nice Home !



Shree Tirumala  
**Bhumika 'B'**



Nice Home !



## BEGIN WITH THE LIVING ROOM

Open the windows,  
and thanks to the intelligent  
cross-ventilation design of the  
living area.

Nice Home !



## SERVE A SURPRISE!

Your brand new kitchen.  
It's not just modern looking,  
it's also perfectly designed  
for the chef in you



Nice Home !



## THE HAPPIEST ROOM IN THE HOUSE!

it's the perfect place  
for growing up.



At Shree Tirumala Bhumika 'B', we see a home as  
'your place of pride'.  
Which is why, we build homes that are  
impeccably designed, flawlessly finished and  
perfectly presented.



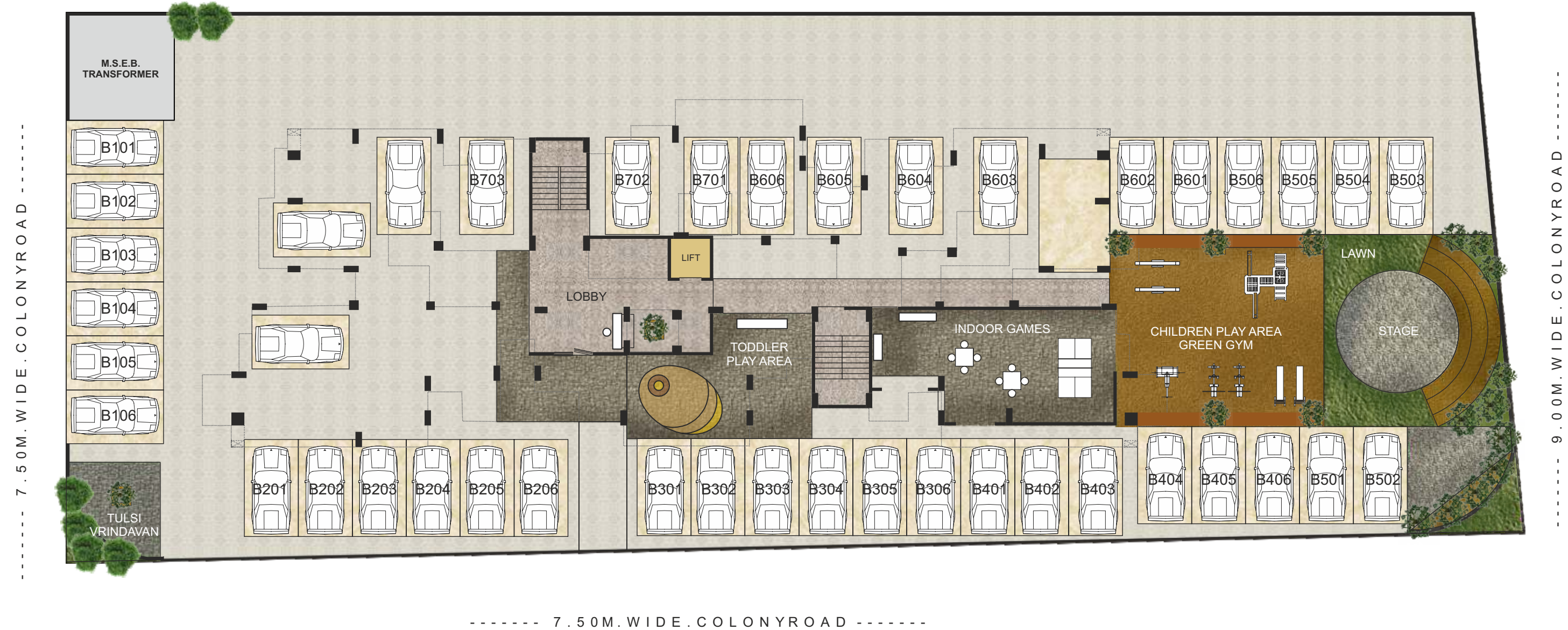


## Ground Floor Plan



### AMENITIES

- Structure : R.C.C. frame structure. External wall 6" thick & internal 4" thick block.
- Plaster : External sand face & internal neeru finish plaster.
- Paint : Internal oil bond distemper & external waterproof paint.
- Doors : Laminated doors with S.S. fittings. Internal flush laminated doors, for toilets laminated doors with granite frames.
- Windows : Three track aluminum powder coated sliding windows with mosquito net, safety grills & granite frames.
- Kitchen : Granite kitchen platform 10' with stainless steel sink, Ceramic tile dado above kitchen platform.
- Bath / Toilets : Concealed plumbing with hot/cold diverter. Provision for geyser. Single lever Jaguar or equivalent toilet fitting. Designer glazed tiles upto 7' heights and antiskid tiles for flooring. Jaguar or equivalent sanitary ware.
- Flooring : Vitrified 24" x 24" tiles. Terrace floor to be in rustic ceramic tiles.
- Electrification : Concealed electrification. Adequate number of point of light, fan and plug points. AC point in Master bedroom. Leon / Gm or equivalent modular switches. Washing machine point in service balcony.
- Parking : Allotted parking for each flat. Parking area paved with checkered tiles.
- Specification : Kone / Power Link or equivalent make lift with battery back-up/Genset. Open Parking will be uncovered.



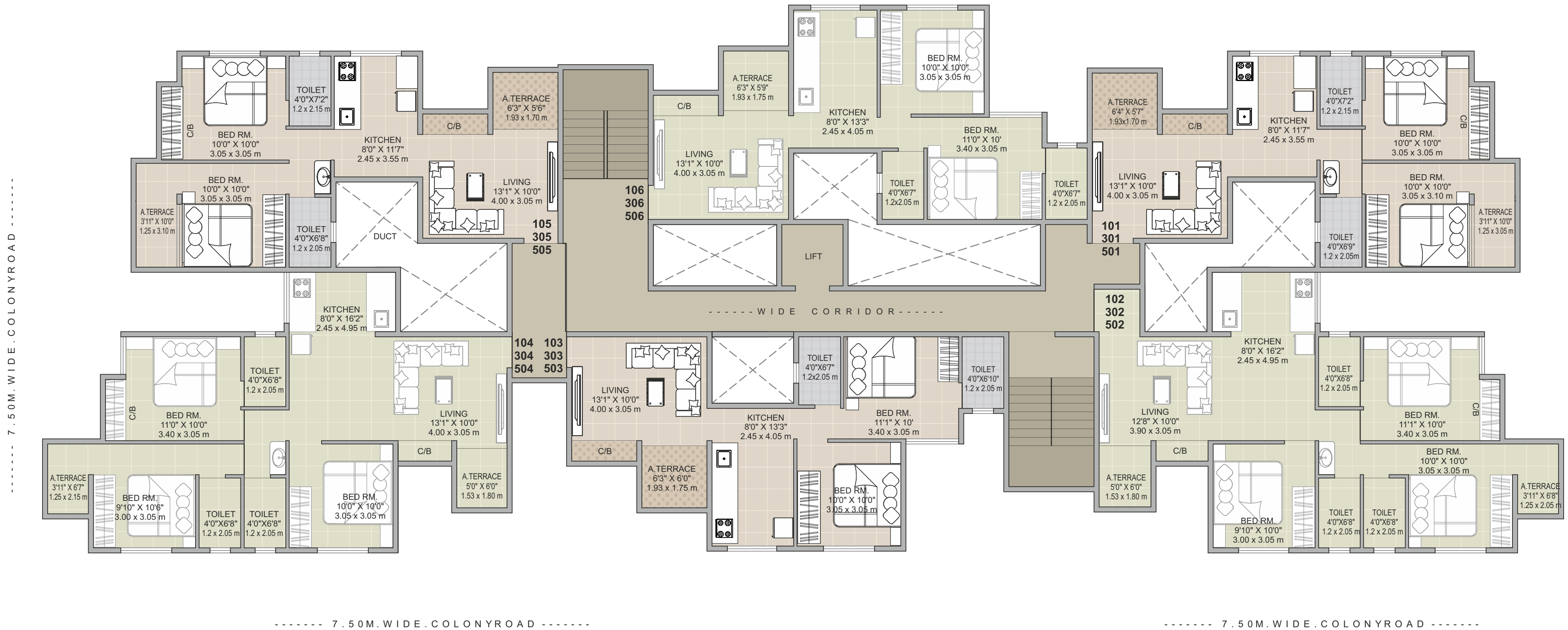
### Specification

- > Tuls Vrindavan > Senior Citizen Sitting > Children's Play Area > Toddlers Play Area
- > Green Gym > Indoor Games > Stage > Lawn > Ample Car Parking > CCTV in Parking
- > Fire Fighting System > Attractive Entrance Lobby





# 1st, 3rd & 5th Floor Plan



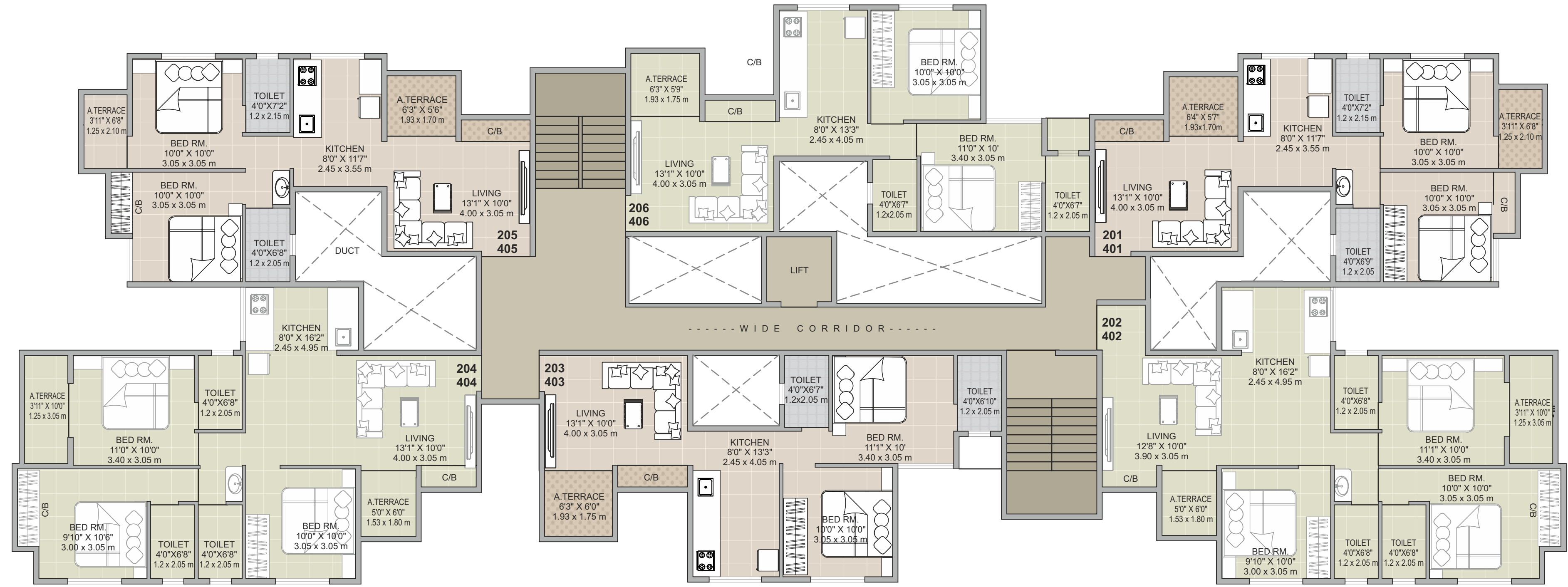


# 2nd & 4th Floor Plan



7.50M.WIDE.COLONYROAD

9.00M.WIDE.COLONYROAD

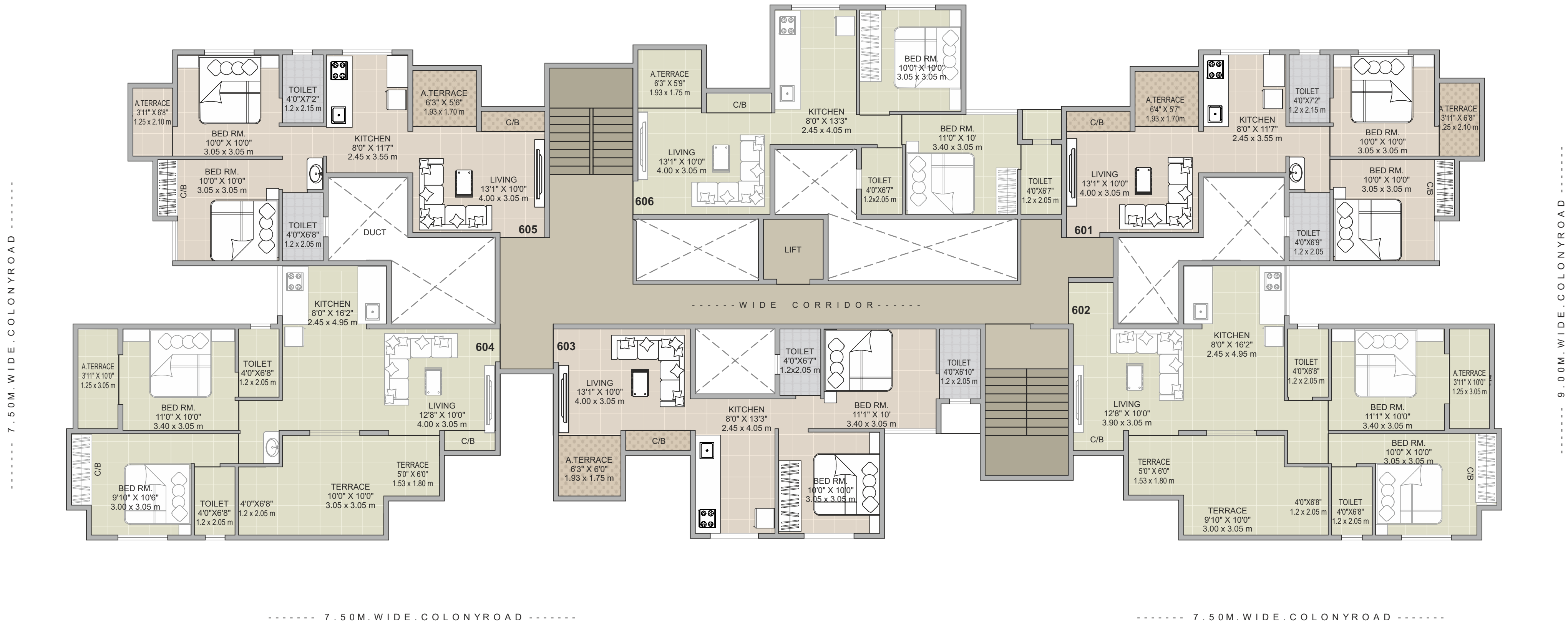


7.50M.WIDE.COLONYROAD

7.50M.WIDE.COLONYROAD



# 6th Floor Plan





7th  
Floor Plan

